

Quick Start Guide

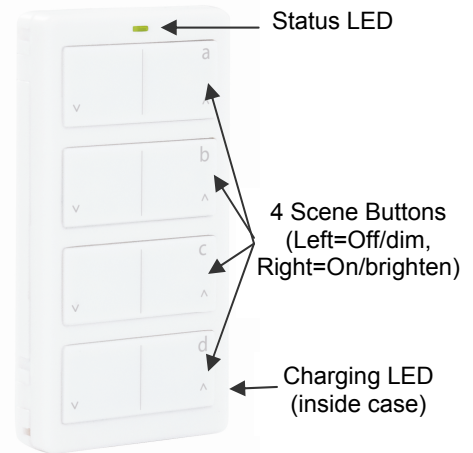
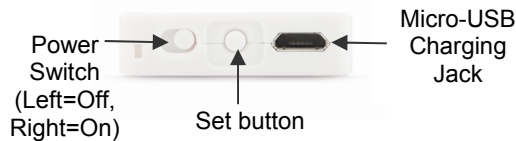
INSTEON® Mini Remote – 4 Scene
Model: 2342-232, 2342-432, 2342-532

Getting Started

Fully charge Mini Remote prior to programming (or anytime the unit is not responding) using a Type A to Micro-B USB cable (sold separately). The red Charging LED will turn off once the battery is fully charged (approximately one hour). Slide the power switch to the ON position.

Note: Mini Remote requires an INSTEON dual-band or RF device to communicate with other devices on your INSTEON network.

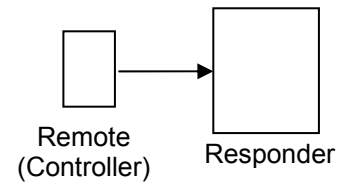
Mini Remote uses a subtle beeper sound to assist setup. It is recommended that you program the unit in a quiet area.



Make Remote a Controller

Use Remote to control other INSTEON devices

- 1) Tap up arrow on Mini Remote scene button of choice
- 2) Press and hold Mini Remote set button until it beeps
Mini Remote LED will start blinking green
- 3) Turn responder on (or any other state such as on 50% or even off)
- 4) Press and hold responder set button until it double-beeps
Mini Remote will double-beep and its LED will stop blinking
- 5) Test by tapping Mini Remote on/off button just programmed
Responder load will respond appropriately



Using Mini Remote

Mini Remote contains four on/off button pairs (a-d). Each pair controls its own scene, sending commands to devices linked specifically to that on/off button pair. Dimmable responders may behave differently if you tap, double-tap or press and hold a button to activate/deactivate a scene. Non-dimming responders will only turn full-on or full-off, no matter what method you use.

Tap	Double-tap	Press and hold
Ramp to preset on-level or off	Full-on or full-off instantly	Brighten or dim until released

The Mini Remote Status LED will flash green once for each on/brighten command sent and red once for each off/dim command sent

Warning: Mini Remote is permanently sealed. Do not attempt to open case. Doing so will damage the remote and void the warranty.

Owner's Manual and Tech Support

Visit: <http://www.insteon.com/support> for complete manual, online tech support and latest product documents.

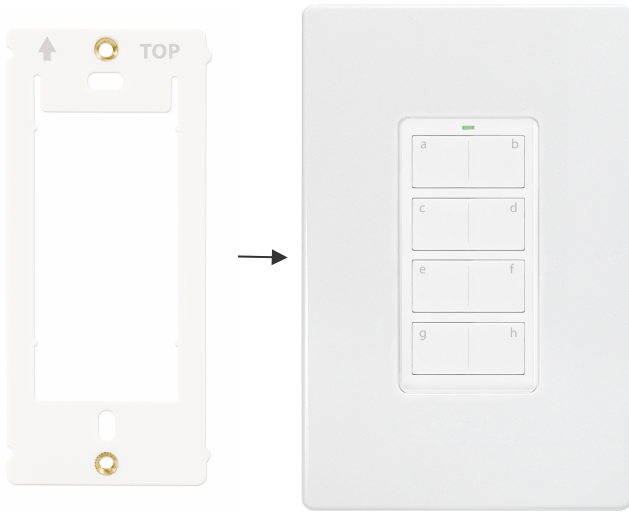
Call: INSTEON Support Line at 866-243-8022

FCC and IC Warnings

This device complies with FCC Rules and Industry Canada license-exempt RSS standard(s). Operation is subject to the following two conditions: (1) this device may not cause harmful interference, and (2) this device must accept any interference, including interference that may cause undesired operation of the device.

Le présent appareil est conforme aux CNR d'Industrie Canada applicables aux appareils radio exempts de licence. L'exploitation est autorisée aux deux conditions suivantes: (1) l'appareil ne doit pas produire de brouillage, et (2) l'utilisateur de l'appareil doit accepter tout brouillage radioélectrique subi, même si le brouillage est susceptible d'en compromettre le fonctionnement.

Mini Remote Accessories



Wall Mount Bracket (2444B4)

- Wall mount your Mini Remote anywhere
- Pair the Wall Mount Bracket with any decorator-style wallplate (sold separately) for the perfect wireless wall switch solution
- Gang two or more together for more control
- Can be installed adjacent to existing wired-in switches
- Easily remove Mini Remote for portability or recharging



Tabletop Stand (in 2444BWH kit)

- Perfect for a nightstand, kitchen counter or coffee table



Visor Clip (in 2444BWH kit)

- Control your home from your vehicle.
- Turn lights on when you arrive and off when you leave



USB Charging Cable (Type A to Micro-B) (2444B5)

- Works with Mini Remote and any other device that uses USB Type A to Micro-B



USB Power Adapter (2444B6)

- For use with USB Charging Cable and any other device that charges via USB cable